

## Instructions for box of ornaments:

Read all instructions before beginning this project.



### Supplies and tools needed:

- White cardstock or Photo paper
- Scissors or Xacto knife
- Metal ruler
- Tacky or similar glue
- Small piece of clear acetate
- Beads to use for ornaments
- Head pins
- Jewelers pliers or needle nose pliers
- Wire cutter

### Ornament box lid:

Print the red ornament box lid (see last page of instructions) on white cardstock.

Cut out the center leaving about 1/8" of white around the opening as indicated by the black line.

Cut into the ends of the lid 1/4" as indicated by the solid lines. These cuts will be slightly outside the black lines on the box cover. This will create flaps at the corners of the box ends.



To fold the box, use a metal ruler or straight kitchen knife.

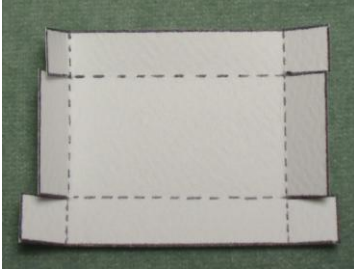


Once all folds are made, glue both ends of the box closed with the corner flaps to the inside of the box. Cut a piece of clear acetate or similar plastic material to fit inside the lid and glue it in place.



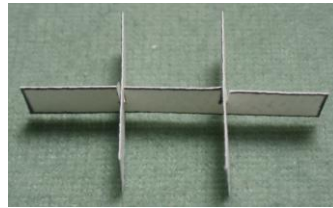
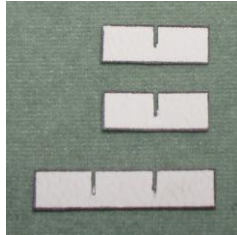
**Ornament box bottom:**

Print the white ornament box bottom (see last page of instructions) on white cardstock. Cut on all solid lines, and fold on the dotted lines in the same manner as above and glue ends closed.

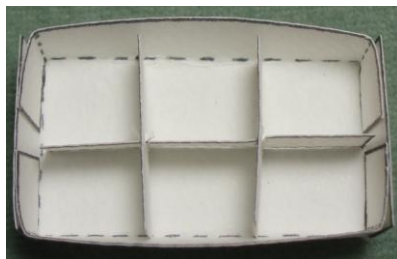


**Ornament Box Dividers:**

Cut a strip of cardstock (see last page of instructions)  
Cut one piece from this strip the same length as the inside of the box bottom (about 1 3/16"). Cut two pieces from this strip the same length as the width of the inside of the box bottom (about 1 1/16"). These measurements can vary slightly. Make slashes 1/8" deep into these three strips so that they will fit together forming 6 separate spaces for your ornaments. These slashes should be about the width of the black line.



Once these dividers are assembled put glue on the edges and place them into the box, being careful to arrange them so they are straight.



**Ornaments:**

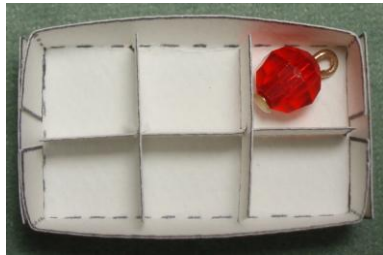
Choose beads for your ornaments that will fit into the spaces you have made for them comfortably. Consider the depth of the box.

Using head pins (from your jewelry findings) put the pin through the bead, letting it protrude about 1/4" to 3/8". Cut off the excess with wire cutters.

Using a jeweler's pliers or needle nose pliers twist the pin to form a loop on the top of the ornament.



Make 6 of these ornaments and glue them into your box. Glue the lid on the box.



**Printable Pieces:**

